

# SonoSite TITAN™

For Emergency Medicine

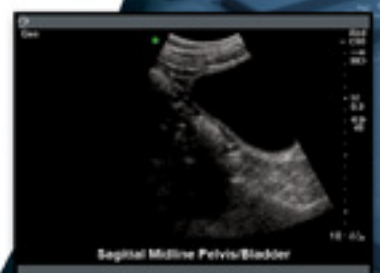
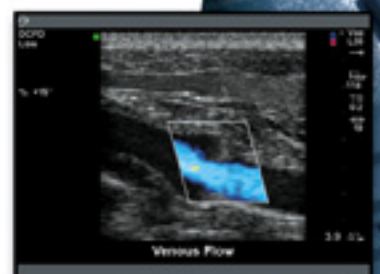
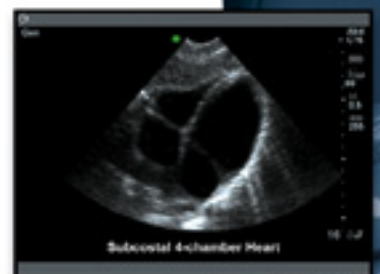
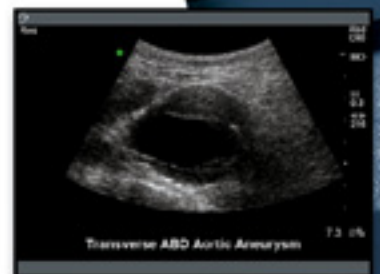
**As the worldwide leader in hand-carried ultrasound** with over 15,000 systems installed around the world, SonoSite provides products to improve patient care, reduce costs and increase department efficiency. With over 600 emergency and trauma systems installed in the USA, we understand what you need to integrate high-quality mobile ultrasound into your practice. In fact, the TITAN system was designed specifically to meet the ultrasound needs of an emergency department.

**The high-resolution image quality,** easy-to-use interface, highly durable design and 12-second boot-up time of the SonoSite TITAN system allows users to get answers when and where needed. And, the new Triple Transducer Connect allows users to rapidly switch between transducer and applications when seconds count.



## Emergency Applications

- Trauma ultrasound (F.A.S.T.)
- Emergent cardiac
- Biliary exams
- Vascular access guidance
- AAA evaluation
- Emergent obstetrics
- Renal exams
- Foreign body assessment



# SonoSite TITAN™

For Emergency Medicine

**High Image Quality:** SonoSite TITAN provides high-resolution digital imaging, enabling confident diagnoses when they are needed.

**Mobility:** At 7.7 pounds, TITAN is the leader in mobility ensuring quality imaging in the tightest of working environments.

**Reliability:** Driving all SonoSite products are application-specific integrated circuits (ASIC) – “ultrasound on a chip”. The ASIC-based design delivers maximum product stability, 12 second boot-up time and rapid mode transitions.

**Durability:** Ultrasound systems used in a mobile setting will get dropped – period. SonoSite systems and transducers are built to withstand the rigors of busy, high-use practices. The robust durability ensures maximum uptime and significantly reduced long-term cost of ownership.

**Ease of use:** TITAN was designed to deliver the shortest path to a great image, confidently and quickly – without adjusting multiple controls. This can be key when there are many users in one department. TITAN helps you focus on the patient rather than the ultrasound system. With the new Triple Transducer Connect, changing between transducers is at the touch of a button.

**Complete Solutions:** SonoSite provides comprehensive answers for training, ongoing quality assurance, credentialing and equipment service.

## TITAN Features and Options:

- C15 4-2MHz broadband transducer for emergent cardiac and general abdominal imaging
- ICT 8-5MHz broadband intracavitary transducer for emergent OB
- L38 5-10MHz transducer for vascular and other superficial exams
- C60 5-2MHz broadband transducer for general abdominal imaging
- Mobile Docking Station
  - Triple Transducer Connect
  - 12” external display
- Color power Doppler
- Pulsed wave Doppler
- Velocity color
- Continuous wave Doppler



 SonoSite®

SonoSite, Inc.  
USA Headquarters 21919 30th Drive SE, Bothell, WA 98021-3904  
Telephone: (425) 951-1200 or (877) 657-8050 Fax: (425) 951-1201

SonoSite Ltd  
European Headquarters Alexander House, 40A Wilbury Way, Hitchin, Herts SG4 0AP, United Kingdom  
Telephone: +44 (0)1462 444800 Fax: +44 (0)1462 444801

 **SONOSITE  
Total Coverage  
SERVICE**

Covers all damage to or loss of your equipment including theft. And in the event you need a replacement system, one will be delivered within 24 hours where available.